

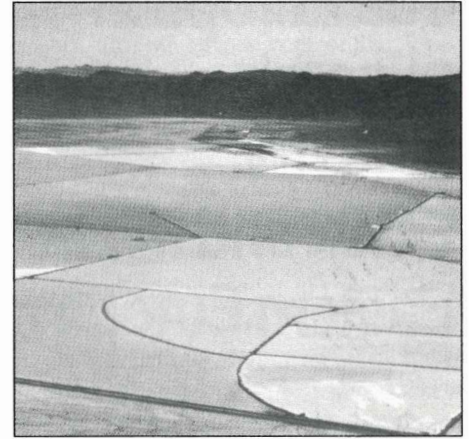
Cover



p4



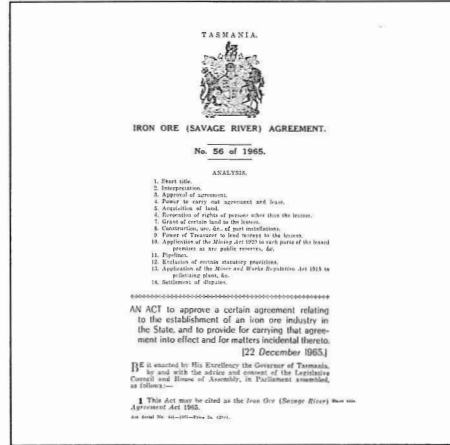
p 16



p 19



p 24



p 42



Cover

Photo by satellite GOES-E, position 75° West, 1980-03-12. Space technology by NOAA/USA. Operations base CMS, Lannion, France. Courtesy by Atlas Copco, Sweden.

16 The new strategic minerals III: lithium

By Gill Burke, Consultant on Mineral Economy, London.

Credits:

Cover: Atlas Copco; p3 (left to right) Atlas Copco; Mining Annual Review; Foote Mineral Company; Mintek; UNDTCD; p18 Foote Mineral Company; p23 Johnson Matthey.

4 The European minerals industry, EC 92, and Eastern Europe

By Magnus Ericsson, The Raw Materials Group Stockholm.

19 The new strategic minerals III: the Platinum Group Metals

By Gill Burke.

Toolbox:

This issue of RMR was produced with Ventura Publisher 2.0, Professional Extension. We use an IBM-compatible AT equipped with 2 Mb of RAM, and a 80Mb hard disk. Our monitor is a 19" Sigma Laserview. Camera ready pages are printed on a HP Laser Jet II, with a QMS Postscript board.

24 Modules for mining agreements II

By Albrecht Stockmayer, GTZ, Eschborn, Germany.

RMR is a member of Tidskriftsverkstaden in Stockholm, a DTP Centre for magazines and periodicals supported by Statens Kulturråd (The Swedish State Council for Culture).