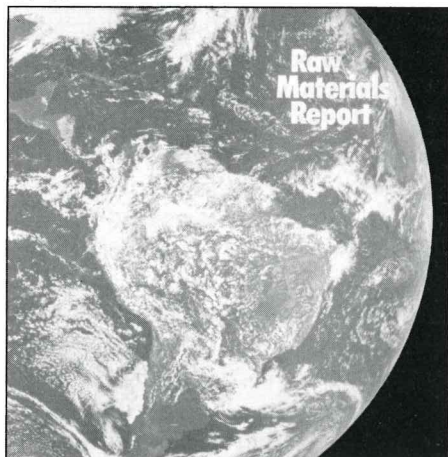
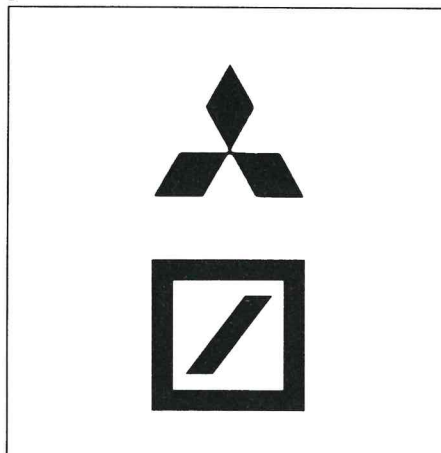


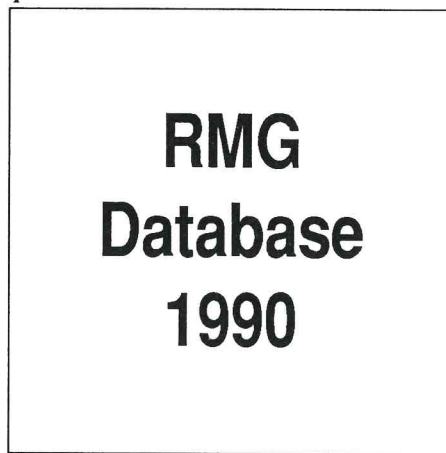
Cover



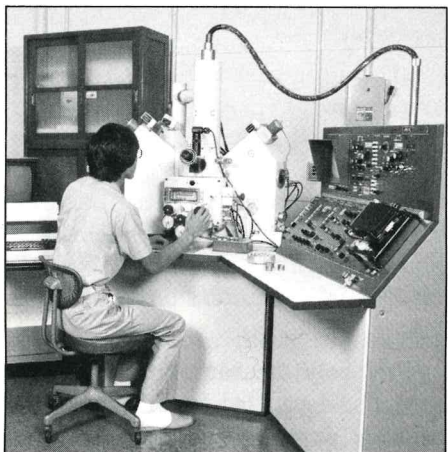
p4



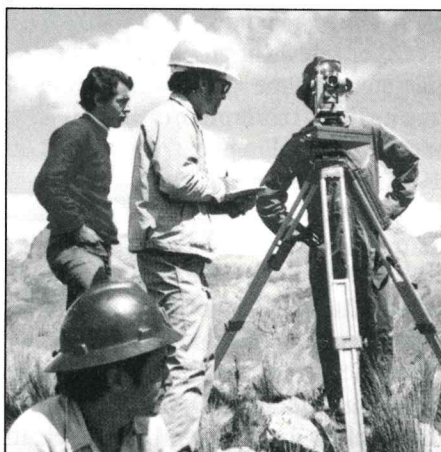
p 6



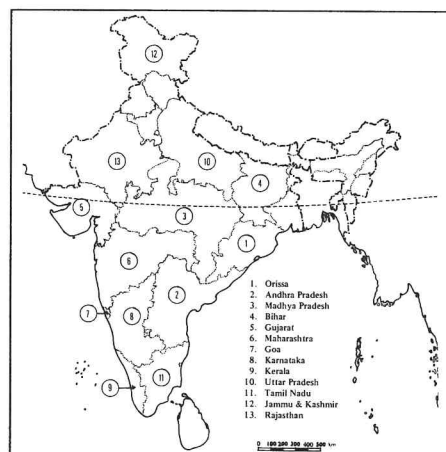
p 11



p 16



p 32



Cover

Photo by satellite GOES-E, position 75° West, 1980-03-12. Space technology by NOAA/USA. Operations base CMS, Lannion, France. Courtesy by Atlas Copco, Sweden.

4 Editorial

By Frederic F Clairmonte, Economic consultant, Geneva

6 Ownership and control in the copper industry

By Andreas Tegen, RMG.

11 The new strategic minerals

By Gill Burke, Consultant on Mineral Economy, London.

16 Commodity report: Bismuth

By Gill Burke.

32 The Indian minerals industry facing year 2000

By G D Kalra, Senior Mineralogist, National Council of Applied Economic Research, New Dehli, India.

Credits:

Cover: Atlas Copco; p3 (left to right) Atlas Copco; Mitsubishi (logo), Deutsche Bank (logo), Mitsui Mining and Smelting; Indian Bureau of Mines; p5 Mitsubishi Metals Corporation; p6 Åke Walldius; p13 Mitsui Mining and Smelting (bottom); p30 Åke Walldius, p34, p37 Indian Bureau of Mines

Toolbox:

This issue of RMR was produced with Ventura Publisher 2.0, Professional Extension. We use an IBM-compatible AT equipped with 2 Mb of RAM, and a 80Mb hard disk. Our monitor is a 19" Sigma Laserview. Camera ready pages are printed on a HP Laser Jet II, with a QMS Postscript board. RMR is a member of Tidskriftsverkstaden in Stockholm, a DTP Centre for magazines and periodicals supported by Statens Kulturråd (The Swedish State Council for Culture).